



PANEL BEATERS

Technology, Advanced Repairer

COMPANY PROFILE 2025

**12 Glen Anil Street
Glen Anil
Durban North
031 569 2722**



About LG Panel Beaters

LG Panel Beaters was incepted in April 2010 and was named after the owner's late parents. We are situated at 12 Glen Anil Street, Glen Anil, Durban. It is due to our loyal client support that it was possible to open a professional workshop. The workshop consists of 4 Korek/Chassis Straightening machines suitable for all private and commercial vehicles. The 2-storey building consists of our admin offices, panel beating and paint preparations being done on the upper level with spray painting, polishing, assembly, mechanical and quality control being completed downstairs. The Company is equipped with all the latest in technology and equipment, ensuring the highest quality of repairs being carried out on all vehicles. LG Panel Beaters



offers clients a lifetime warranty on all paint work as the company consists of a well-maintained and serviced spray booth with extractor and a complete fully operational mixing room.



LG Panel Beaters is one of the few repairers in the country that has its very own in-house towing service consisting of Sling and Roll-Back Tow Trucks, which is available 24 Hours a day, 7 Days a week, and is for the exclusive use of all clients and panel members.

Mission Statement

We are here to offer a professional service to all clients and Insurance Companies, hence LG Panel Beaters operates fully functional 6 days a week with a staffing of 28 hardworking and dedicated individuals with management staff being available 24 hours a day.

The company ensures that both clients and their vehicles are taken care of whilst on our property with 24-hour security guarding and monitored alarm, as well as complete CCTV surveillance. LG Panel Beaters has adequate internal and external insurance cover with New National through Westwood Insurance Brokers

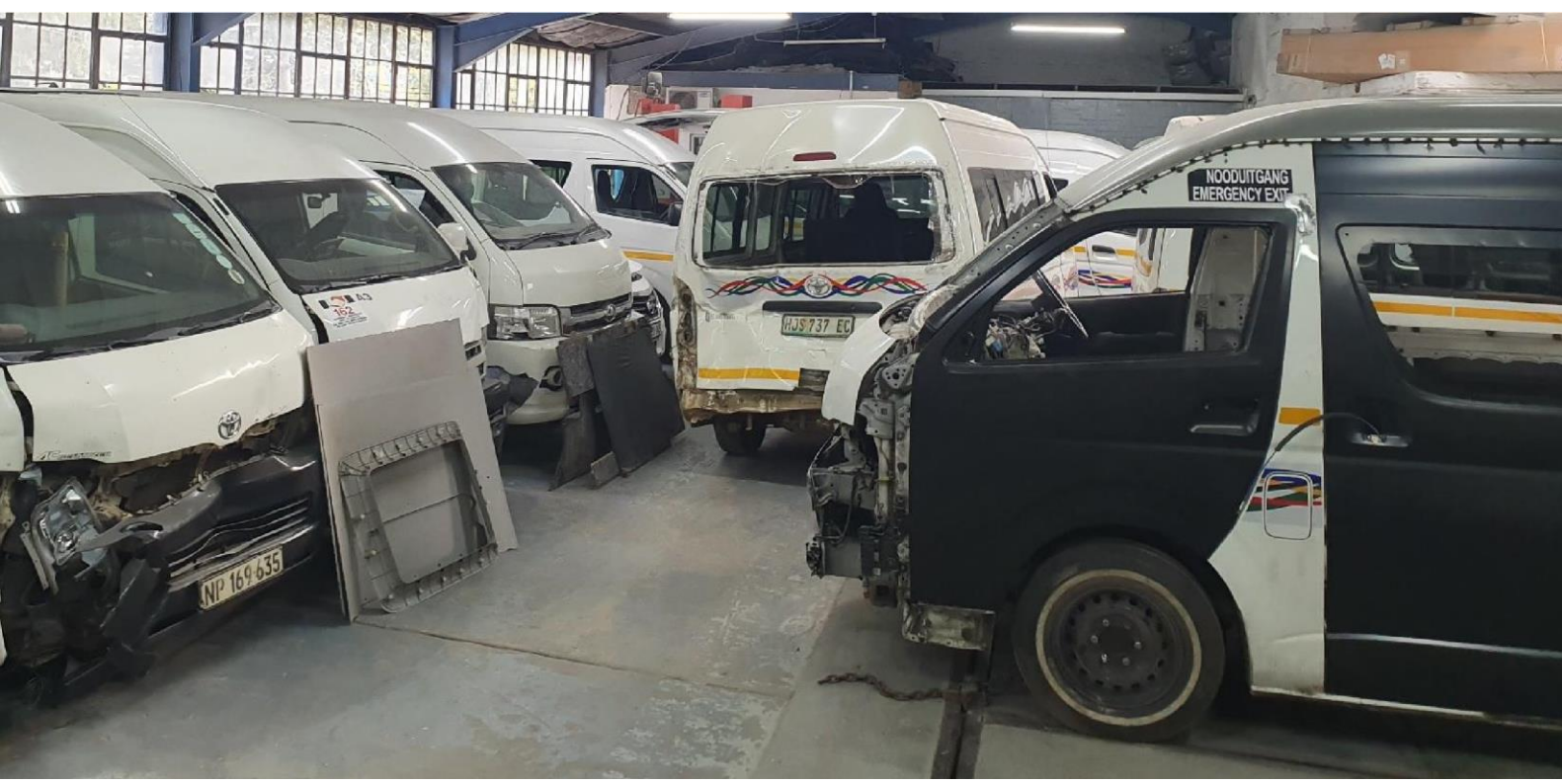
The company adheres to strict guidelines and regulations and ensure that all rates are kept within the price guidelines set out in SLA's between LG Panel Beaters & Insurance Companies. Further to this, in addition to repairing as much as possible, LG Panel Beaters quote on high quality alternate spares as well as the use of good condition, second-hand original spares in an effort to keep clients vehicles as close to original as possible.

OUR MISSION STATEMENT

To provide a professional service to all clients and insurance companies, ensuring that our clients receive the best possible service at the most affordable costs.

OUR VISION

To become a preferred private, minibus and heavy duty auto repairer throughout the KZN and neighbouring regions.



The LG Team



MANIE PILLAY
Director

LG Panel Beaters was the dream of Manie Pillay who has over 20 years in the Panel beating industry. After completing his Matric in Clairwood High School, Manie went on to complete his N3 in Panel Beating. He thereafter served as an apprentice at BMW before moving to Durban to spend 16 years in the industry before branching out on his own to form LG Panel Beaters.

Manie Pillay takes pride in leading the team at LG Panel Beaters. He started LG Panel Beaters in 2010, where he has led it to become one of the most respected minibus taxi panel beating specialists in the industry and have thus extended their expertise into the heavy commercial vehicle sector. Manie, with his team of highly qualified individuals, continues to excel beyond expectation in the repairs of vehicles.



LYLE NAIDOO
Managing Director

Lyle, a former educator, has been involved in LG Panel Beaters over the past decade. Lyle has completed his Bachelor of Education Degree specializing in Mathematics and IT however followed his passion of getting involved in the business sector where he has been heading LG Panel Beaters under the guidance of Director, Manie Pillay.

Lyle is responsible for the overall operations of the company and continues to grow relationships between LG Panel Beaters and new clients. Lyle ensures that quotations, liaison with assessors and insurance companies and completion of vehicles are all completed ensuring that the repair process of all vehicles are done in a timely manner with incredible workmanship.



DESAN PILLAY
Workshop Manager

Desan has been a part of the LG Panel Beaters Family since its inception in 2010. He has led the assembly department, and has since grown into overseeing the overall workshop operation on a daily basis. Desan has taken a hands on approach in the business and ensures that vehicles are completed in a completely time efficient manner.



PRELISHA DURGA
Administration Manager

Prelisha has been running the admin department of the business since the business was started. She completed her Matric and joined the business and has been part of its growth over this time. Prelisha takes the responsibility of accounts and overall administration.



ZAMAZULU ZULU
Marketing Manager

Zama has joined the business in 2022 and brings an extensive background in the motor and insurance industry. She brings with her, strong relationships with key individuals in the Taxi Industry. She has become instrumental in the continued relationship building and growth between LG Panel Beaters and Taxi Associations, Clients & Business Partners. Zama also take the responsibility of assisting clients with the overall claims process with continues liaison between clients, insurance companies and us as the repairer, keeping all parties updated on the status of repairs.

12 Glen Anil Street
Glen Anil
Durban North
031 569 2722
info@lgpanelbeaters.co.za



PANEL BEATERS

Technology, Advanced Repairer



AN APPROVED REPAIRER FOR:



Preferred Panel of Repairers

Since LG Panel Beaters have opened its doors in 2010 and we have been accepted onto SAARAA's body.

LG Panel Beaters is a Level 1 B-BBEE Contributor.

The Company is also listed as a preferred repairer of various Insurance Companies, namely:

- Clarendon Transport Underwriting Managers – CTU
- SA Taxi Finance / Mobalyz
- Mobility Insurance Underwriting Managers
- Vulindlela Underwriting Managers - VUM
- Santam Insurance
- King Price Insurance
- Hollard Insurance
- ONE Insurance Underwriting Management – ONE
- Guardrisk General Insurance Company Limited (GGI)
- Dotsure Insurance
- Oakhurst Insurance

LG Panel Beaters has also been placed on the Preferred Panel of Repairers for the eThekweni Municipality as well as the South African Police Services (SAPS).

LG Panel Beaters has also been named a preferred repairer for Mazda South Africa.

Since Inception, The Company has also become A trusted repairer to many major South African company fleets, one of which is TAKEALOT, as well as for many major taxi associations throughout the country. LG Panel Beaters is also proudly endorsed by SANTACO.

Capability of Repairing Vehicles

As a company, we pride ourselves with having a staff compliment that is made up of qualified skilled and semi-skilled individuals to offer a professional service to our clients. Our staff are qualified with skills of Panel Beating, Filing, Spray Painting and Mechanical Repairs.

LG Panel Beaters is one of the very few repairers who hold a reserve stock of spares that are required for the repairs of Mini-bus taxi's, which in turn allows for us to offer clients and insurers a cost-effective option to repair their vehicles. Where LG Panel Beaters may not carry required spares, the company uses suppliers that have been endorsed and are trusted within the Motor Industry for quality. LG Panel Beaters has been entrusted with credit facilities at all major dealerships and spares suppliers across the greater KZN area which ensures spares are easily accessible at any time. The Company uses the latest in technology in quoting and currently use Dr Smash, GT Motiv & Audatex systems.

We are an Approved Repairer for:



PANEL BEATERS
Technology, Advanced Repairer



Workshop Capacity

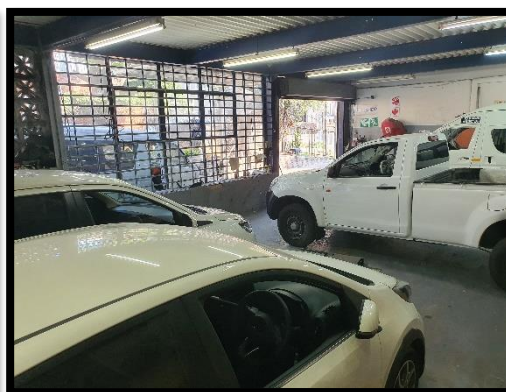
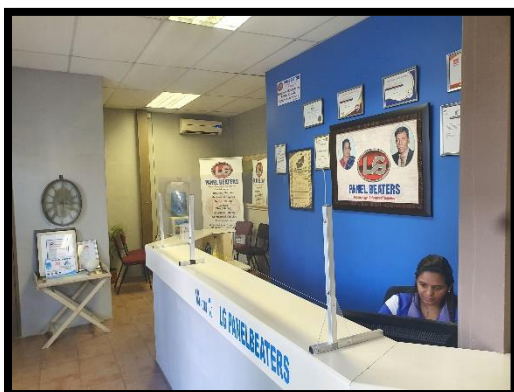
LG Panel Beaters has the capacity to hold more than 30 vehicles at any given time at the workshop, with a further storage of 50 vehicles at our off-site storage yard.

The workshop has the equipment for panel beaters to work on multiple vehicles at any given time on the Korek and cater for the repairs of all types on vehicles.

The company has a dedicated file bay for filing and paint preparations and a fully maintained and serviced spray booth.

Our workshop is equipped with the latest in tools and equipment which ensures precision in our workmanship.

Our admin department is powered with an Inverter system and we are currently in the process of installing a fully operational generator which will allow for continuous operations of the entire workshop in the unfortunate case of power outages.



Corporate Social Responsibility

LG Panel Beaters Kids Day is an initiative that began in 2014, aimed at giving underprivileged children in the Durban Area a day full of fun and games. The Company has successfully hosted the LG Kids Day, growing it annually, as LG Panel Beaters strives to make this an annual event, pushing the boundaries of this event each year. The 2018 rendition of the LG Kids Day went above and beyond expectations as the company paid tribute to 100 years of Former President, Nelson Mandela. The Company also embarks on many feeding schemes and is a partner in the initiatives of the Phoenix Child Welfare Society.

As a company, LG Panel Beaters aims at uplifting the community, and offer annual internship programmes to teach trade skills to the disadvantaged youth.



00 August 2019

L.G Panel Beaters
12 Glen Aoli Street
Glen Aoli
Tel: 031 556 2722/ 082 414 2884
Email: mara@lgpanelbeaters.co.za

Dear Sir

RE: LETTER OF THANKS AND APPRECIATION

The management of Phoenix Child Welfare takes much pleasure in recording our most sincere appreciation to you for choosing Sahara, Rotary Children's Home and 101 Children's Home as your beneficiary.

We most sincerely appreciate your generous sponsorship of meat and vegetable meals. Your efforts in partnering with us have impressed us immensely. We acknowledge with heartfelt admiration and appreciation the unrelenting efforts of our donors who afford us the opportunity to help less fortunate women and children. Absolutely crucial is your willingness to help build the lives of our women and children and really, without people like you The Sahara would not be able to be run as effectively as it is.

Your assistance has enabled us to impact the lives of many women and children who have been and many still being victims of domestic violence therefore, for this we are most grateful.

We thank you for your support/ partnership and will endeavour to keep you informed on a regular basis.

Yours Sincerely

Nadia Munany
Centre Manager: The Sahara
Phoenix Child Welfare
Tel: 005 912 0740
Email: nadia@childwelfarephoenix.co.za

THE SAHARA
COMMITTED TO THE PROTECTION AND PROMOTION OF HUMAN RIGHTS

Estfd. 1994
NPO 002-284
P.O. Box 309
Mount Edgecombe
4300
Tel. No. (031) 500 3671



REPAIR PORTFOLIO



2016 Toyota Quantum - Before



2016 Toyota Quantum - After



2018 Toyota Quantum - Before



2018 Toyota Quantum - After



TATA Engine Overall - SAPS



2014 Mercedes Sprinter - In Progress



ISUZU Truck - Takealot.com - Before



ISUZU Truck - Takealot.com - After